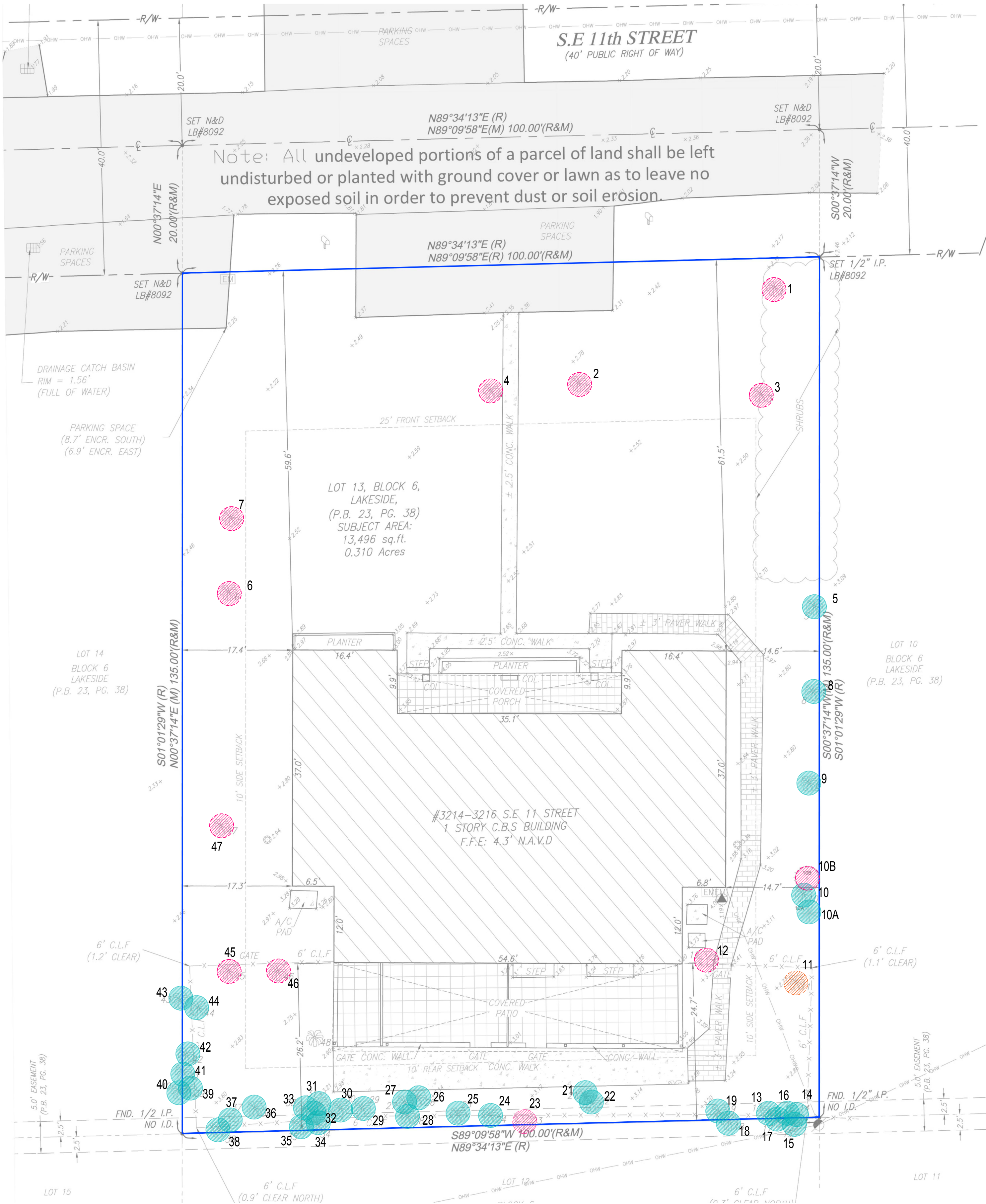


D:\working\area\CL\Urban\Area\Diagram\PROJ\BCT\35002\Revise\Diagram\Diagram\02_Plan\Map_1.L101_101.dwg 11/01/2025 10:02am by area



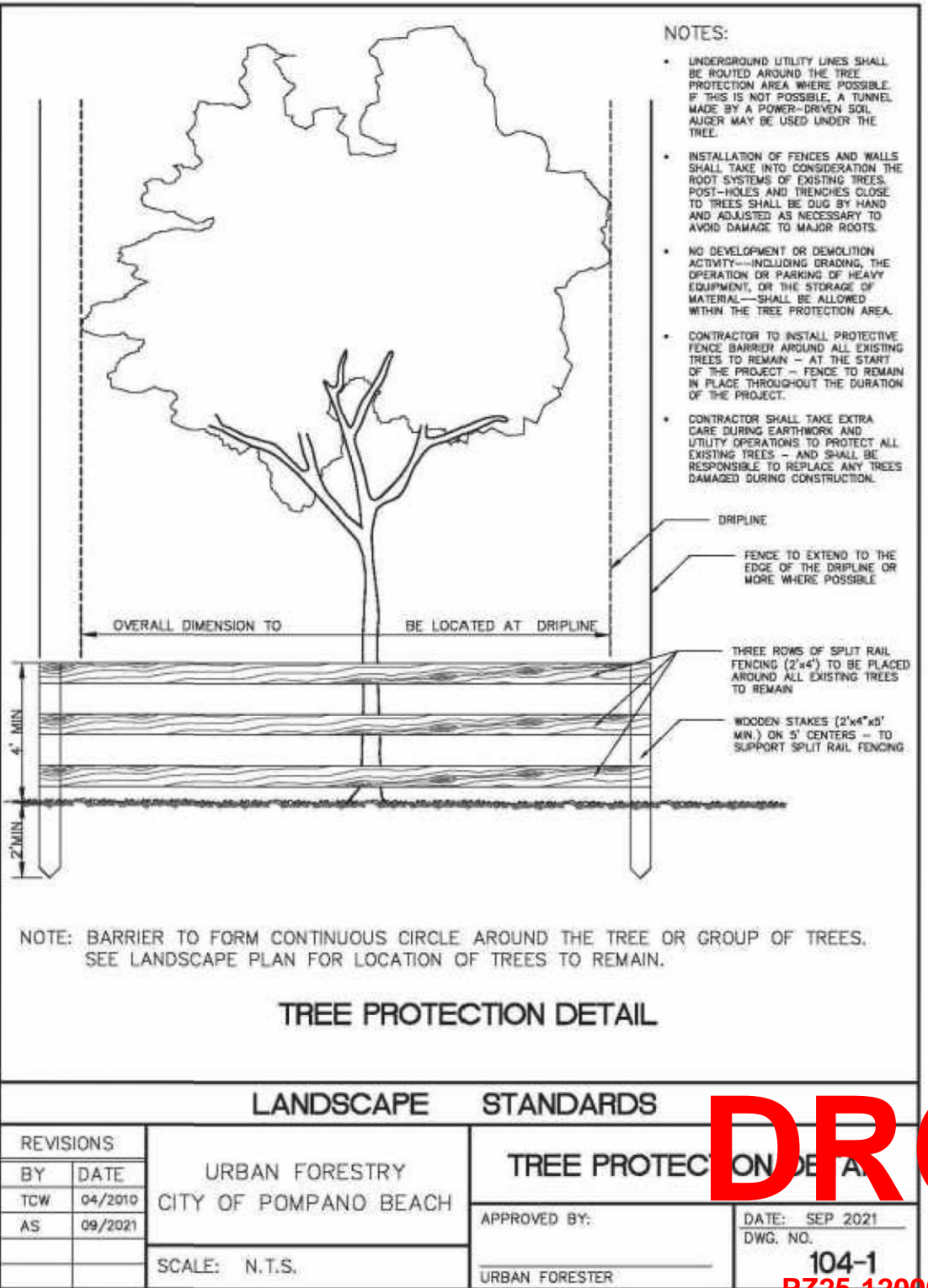
TREE DISPOSITION TABLE

NO.	BOTANICAL NAME	COMMON NAME	DISPOSITION	CONDITION/REMARKS	DBH (in)	HEIGHT(ft)	SPREAD(ft)	REMOVAL/MITIGATION		REPLACEMENT COST
								PALM (1:1)	DBH	
1	SYAGRUS ROMANZOFFIANA	QUEEN PALM	REMOVE	50%, CAT 2 INVASIVE	9	30	16	1		\$ 662.55
2	PTHCHOSPERMA ELEGANS	ALEXANDER PALM (CLUSTER)	REMOVE	40%	2	30	10	1		\$ 450.00
3	ADONIDIA MERRILLII	CHRISTMAS PALM	REMOVE	50%	4	20	13	1		\$ 441.70
4	DYPSIS LUTESCENS	ARECA PALM	REMOVE	60%	2	20	16	1		\$ 450.00
5	ADONIDIA MERRILLII	CHRISTMAS PALM	REMAIN	50%	4	20	13			
6	ADONIDIA MERRILLII	CHRISTMAS PALM	REMOVE	45%	3	10	10	1		\$ 198.77
7	ADONIDIA MERRILLII	CHRISTMAS PALM	REMOVE	45%	3	10	10	1		\$ 198.77
8	ADONIDIA MERRILLII	CHRISTMAS PALM	REMAIN	45%	3	10	10			
9	ADONIDIA MERRILLII	CHRISTMAS PALM	REMAIN	45%	3	10	10			
10	PTHCHOSPERMA ELEGANS	ALEXANDER PALM	REMAIN	60%	3	25	13			
10A	PTHCHOSPERMA ELEGANS	ALEXANDER PALM	REMAIN	60%	3	25	13			
10B	SCHINUS TEREBINTHIFOLIA	BRAZILIAN PEPPER	REMOVE	CAT 1 INVASIVE	4	20	16		0	
11	PTHCHOSPERMA ELEGANS	ALEXANDER PALM	RELOCATED	60%	3	25	13			
12	CUPANIOPSIS ANACARD	CARROTWOOD	REMOVE	CAT 1 INVASIVE	10	25	20		0	
13	ADONIDIA MERRILLII	CHRISTMAS PALM	REMAIN	50%	4	25	13			
14	ADONIDIA MERRILLII	CHRISTMAS PALM	REMAIN	50%	4	25	13			
15	ADONIDIA MERRILLII	CHRISTMAS PALM	REMAIN	OFF-SITE	4	25	13			
16	ADONIDIA MERRILLII	CHRISTMAS PALM	REMAIN	50%	4	25	13			
17	ADONIDIA MERRILLII	CHRISTMAS PALM	REMAIN	OFF-SITE	4	25	13			
18	DYPSIS LUTESCENS	ARECA PALM	REMAIN	OFF-SITE	2	20	12			
19	DYPSIS LUTESCENS	ARECA PALM	REMAIN	50%	2	20	12			
21	ADONIDIA MERRILLII	CHRISTMAS PALM	REMAIN	50%	3	20	13			
22	ADONIDIA MERRILLII	CHRISTMAS PALM	REMAIN	50%	3	20	13			
23	FICUS AUREA	STRANGLER FIG	REMOVE	46%	49	30	26		49	\$ 5,713.26
24	ADONIDIA MERRILLII	CHRISTMAS PALM	REMAIN	50%	4	25	13			
25	ADONIDIA MERRILLII	CHRISTMAS PALM	REMAIN	50%	2	25	16			
26	ADONIDIA MERRILLII	CHRISTMAS PALM	REMAIN	50%	3	25	10			
27	ADONIDIA MERRILLII	CHRISTMAS PALM	REMAIN	50%	4	25	13			
28	ADONIDIA MERRILLII	CHRISTMAS PALM	REMAIN	50%	4	25	16			
29	ADONIDIA MERRILLII	CHRISTMAS PALM	REMAIN	50%	4	25	16			
30	ADONIDIA MERRILLII	CHRISTMAS PALM	REMAIN	50%	2	25	10			
31	ADONIDIA MERRILLII	CHRISTMAS PALM	REMAIN	50%	3	25	13			
32	ADONIDIA MERRILLII	CHRISTMAS PALM	REMAIN	50%	2	25	16			
33	ADONIDIA MERRILLII	CHRISTMAS PALM	REMAIN	50%	2	25	16			
34	ADONIDIA MERRILLII	CHRISTMAS PALM	REMAIN	50%	3	25	16			
35	ADONIDIA MERRILLII	CHRISTMAS PALM	REMAIN	50%	4	25	10			
36	ADONIDIA MERRILLII	CHRISTMAS PALM	REMAIN	50%	4	25	13			
37	ADONIDIA MERRILLII	CHRISTMAS PALM	REMAIN	50%	2	25	16			
38	ADONIDIA MERRILLII	CHRISTMAS PALM	REMAIN	50%	3	25	13			
39	ADONIDIA MERRILLII	CHRISTMAS PALM	REMAIN	50%	2	25	16			
40	ADONIDIA MERRILLII	CHRISTMAS PALM	REMAIN	OFF-SITE	2	25	16			
41	ADONIDIA MERRILLII	CHRISTMAS PALM	REMAIN	50%	3	25	10			
42	ADONIDIA MERRILLII	CHRISTMAS PALM	REMAIN	50%	3	25	13			
43	ADONIDIA MERRILLII	CHRISTMAS PALM	REMAIN	OFF-SITE	3	25	16			
44	ROYSTONIA REGIA	ROYAL PALM	REMAIN	60%	10	25	16			
45	ADONIDIA MERRILLII	CHRISTMAS PALM	REMOVE	50%	3	25	13	1		\$ 552.13
46	ADONIDIA MERRILLII	CHRISTMAS PALM	REMOVE	50%	3	25	13	1		\$ 552.13
47	LIVISTONA DECIPENS	RIBBON PALM	REMOVE	50%	8	20	13	1		\$ 375.00
TOTAL MITIGATION VALUE FOR TREES AND PALMS										\$ 9,594.29

		REMAIN/ RELOCATE	REMOVE	TOTAL EXISTING ON-SITE	
				PALMS	TREES
	TREES	0	3		3
	PALMS	34	9	43	
TOTAL MITIGATION REQUIRED				9	49
TOTAL PROPOSED MITIGATION CANOPY (SIMPSON STOPPER + 1 LIVE OAK) 2 x 4" + 6" = 14" CAL. TREES				CALIPER MITIGATION = 14" CAL.	
TOTAL PROPOSED LIVE OAK WITH EXTRA HEIGHT TOWARDS MITIGATION 3 x 4" EXTRA HT TREES				USE ADDITIONAL HT IN CODE REQUIRED TREES TO MITIGATE THE REMAINDER 35" CAL. TREE = 12 x 3" CAL. TREES, ESTIMATED VALUE OF 35" CAL. TREES = 12 x \$ 750 = \$ 9000	
LIVE OAK -12"HT MARKET VALUE \$ 300 X 2.5 = \$ 750					
LIVE OAK -20"HT MARKET VALUE \$ 550 X 2.5 = \$ 1,375					
TOTAL PROVIDED EXTRA HEIGHT IN ESTIMATED MARKET VALUE (3x20"HT LIVE OAKS) \$ 1,375 + \$ 750 = \$ 825 X 3 = \$ 2,475				TOTAL PROVIDED ADDITIONAL HT TOWARDS MITIGATION IN VALUE = \$ 2,475	
TOTAL PROPOSED REPLACEMENT 14" HT PALMS				9	
TOTAL MITIGATION DEFICIT TO BE CONTRIBUTED IN LIEU TO TREE FUND				\$ 9,000 - \$ 2,475 = \$ 6,525	

TREE DISPOSITION NOTES

- TREE DISPOSITION PLAN IS BASED ON ALL AVAILABLE INFORMATION. CONTRACTOR TO REPORT ALL DISCREPANCIES TO LANDSCAPE ARCHITECT FOR REVIEW PRIOR TO CONSTRUCTION/DEMOLITION.
- ALL PITS TO BE FILLED THE SAME DAY OF REMOVAL OF TREES AND/OR PALMS. RESTORE SURFACE WITH SOD OR MULCH TO MATCH EXISTING CONDITIONS.
- CONTRACTOR SHALL VERIFY ALL EXISTING ABOVE AND UNDERGROUND UTILITIES 48 HOURS PRIOR TO ANY ON-SITE EXCAVATION.
- ALL EXISTING TREES/PALMS TO REMAIN TO BE PROTECTED PER INDUSTRY STANDARDS. SEE TREE PROTECTION DETAIL
- TREE SURVEY DATED 04/16/2024, PROVIDED BY: RAHIM VEDAEE
EMAIL: RVEDAEE1@YAHOO.COM
PHONE: 954 868 4763



DL

DULAND DESIGN
land planners landscape architects

LA 0606948

STATE OF FLORIDA

LANDSCAPE ARCHITECT

LA 0606948

3214 SE 11TH STREET

POMPAHO BEACH, FLORIDA 33062

TITLE: TREE DISPOSITION

DATE: JANUARY 27, 2025

DRAWN BY: CD

CHECKED BY: CD

JOB NO. 4020

SHEET: L 1.01

P225 12000005

03/05/2025